

TECHNICAL DATA SHEET - WATERPROOFX 100

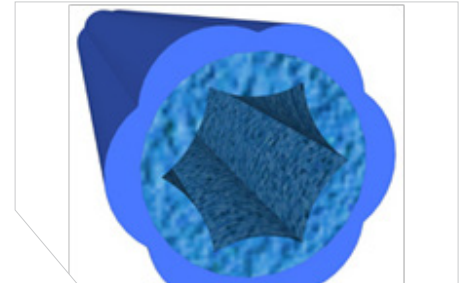
WaterproofX 100 is a certified, hexagonal injection hose made of a specially formulated plastic polymer with unique qualities.

The hose is equipped with micro ports, so the injection fluid is pushed out to seal around the hose. The hose will transport the injection fluid even when installed on an uneven surface.

After the injection the pressure will go back into the hose and the discharge ports will then close again.

The unique shape enables the micro ports in the hose to open/close even if it is bent strongly.

The allowed maximal length of the injection hose is 30 meters.
WaterproofX 100 can be re-injected when using a polymer injection fluid.



APPLICATION

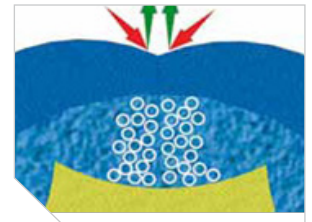
WaterproofX 100 is equipped with discharge micro ports, equally spaced over its entire circumference, which allows the injection fluid to penetrate the concrete in all directions. This means that no areas along the hose are excluded by injection.

The thickness of the injection hose is so strong that it will not be compressed, even at high molding pressure.

The micro ports in the injection hose opens at a 1 bar internal injection pressure. As the pressure increases, the injection fluid will penetrate cracks, pores etc.

The 1 bar opening pressure of the micro ports prevents concrete silt and water from getting into the hose during injection.

The injection can take place no earlier than 28 days from casting.



INSTALLATION

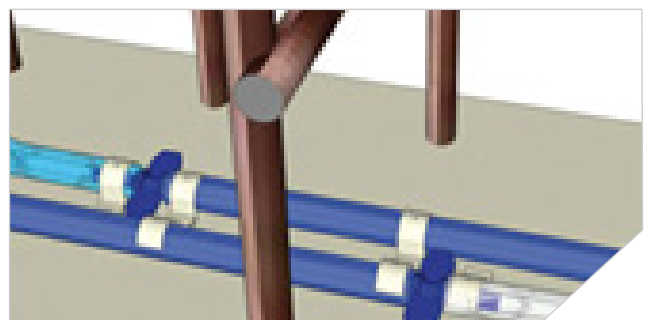
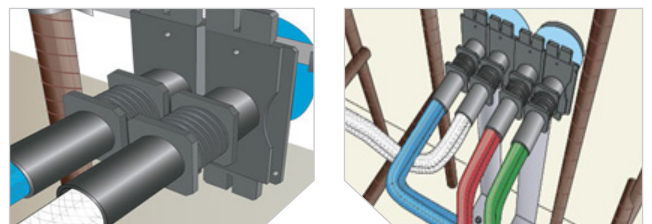
The concrete surface must be even, free of loose particles and sharp-edged displacements. When installing WaterproofX 100 ice, water and cement silt must be removed before installing the hose with fixing clamps.ps.

The distance between two fixing- points should be 100-150 mm. The hose must be installed in the middle of the construction joint with a minimum concrete cover of 100 mm.

At hose section joints, the two hoses are to overlap each other by 150 mm lying parallel to one another at a distance of 30-50 mm.

Make sure that the Varioclix (injection cups) are always accessible for injection. The feeding tubes are to be installed on the rebar or formwork with Varioclix so the hose is not damaged by vibrations from immersion vibrator when casting.

The feeding tubes can be delivered in several colours.



TECHNICAL SPECIFICATIONS

Profile:	Hexagonal
Colour:	Blue
Material composition:	PVC-P special type for extrusion, conforms with ROHS, contains no substance of content according to SVHC-list, Phthalatfree production
Diameter:	External: 13 mm Internal: 8,3 mm
Micro ports, length:	Approx. 3 mm. Spacing intervals: approx. 10 mm
Temperature range:	- 10°C / +120°C

PACKAGING

Article no.	Description	Packaging
1141800	WaterproofX 100, 120 m without accessories	120 m
1141801	WaterproofX 100 Komplet incl: 1 x 40 meter WaterproofX 100 1 x 2 m PVC feeding tube 8 x Hose connector 4 x Varioclix 200 stk. Stecki fixing clips	40 m

STORAGE

Store dry and cold

SAFETY DATA SHEET

According to CLP regulation 1272/2008 a safety data sheet is not required for this product.

CE MARKING

WaterproofX 100 is not subject to a harmonized standard and therefore do not have to be CE marked according to the Building Products Regulation No. 305/2011.

ACCESSORIES



1141800 - WaterproofX 100, L=120 mtr
1141801 - WaterproofX 100 komplet

1141810 - Hose connector



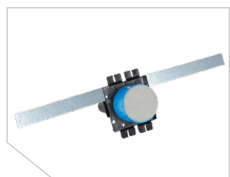
1141803 - Feeding tube red, PVC
1141836 - Feeding tube green, PVC

1141808 - Grouting nippel M8



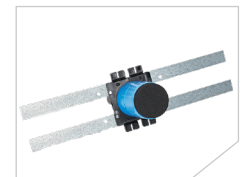
1141806 - Grouting nippel M8/55 mm
1141807 - Grouting nippel M8/100 mm

1141811 - Varioclix



1141816 - Varioclix 30 mm 1 x metal strip

1141815 - Varioclix 60 mm 2 x metal strips



1141820 - Fixing clamp

1141809 - Stecki fixing clips



1141825 - Drive-in anchor